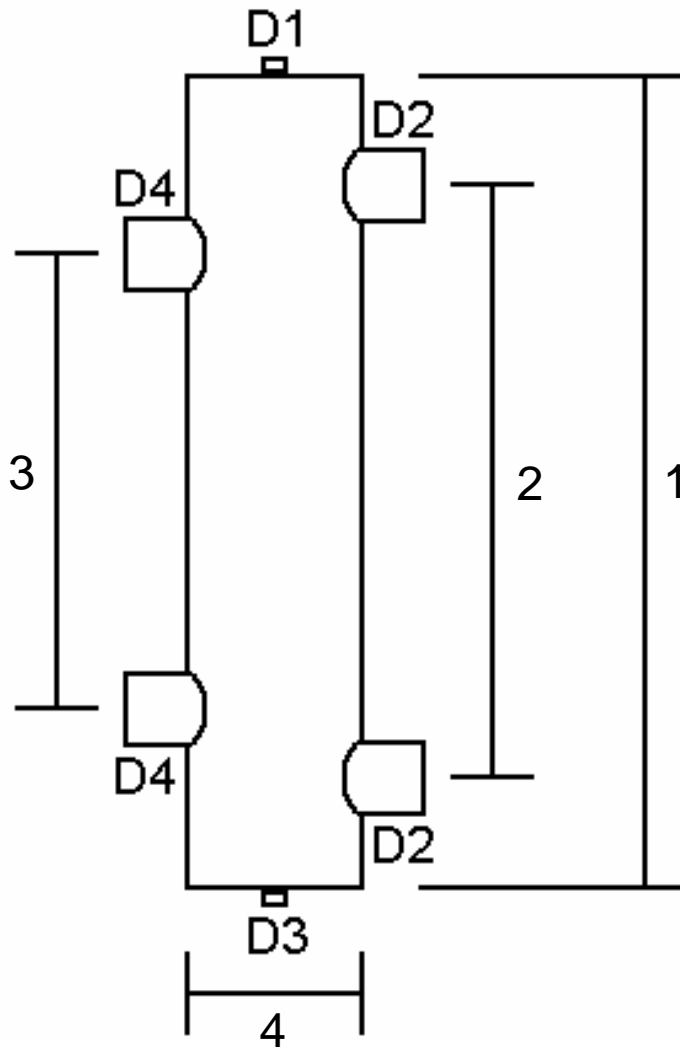


STREBEL Vertical Low Loss Header Size Guide For System with Outputs > 850 kW



Legend

- D1 = AAV Connection
- D2 = Connections to Boilers
- D3 = Drain Connection
- D4 = Connections to Heating System

- 1 = LLH Length
- 2 = Boiler Connections c/c
- 3 = System Connections c/c
- 4 = LLH Nominal Bore

Max. kW	Dimension				Connection			
	1	2	3	4	D1	D2	D3	D4
850	1300mm	1040mm	910mm	10" NB	3/4"	4"	3/4"	4"
1,000	1410mm	1125mm	985mm	12" NB	3/4"	5"	1"	5"
1,250	1575mm	1260mm	1100mm	12" NB	3/4"	6"	1"	6"
1,500	1725mm	1380mm	1210mm	14" NB	3/4"	6"	1"	6"
1,750	1864mm	1490mm	1305mm	15" NB	3/4"	7"	1"	7"
2,000	1995mm	1595mm	1395mm	16" NB	3/4"	7"	1"	7"
2,500	2230mm	1785mm	1560mm	18" NB	3/4"	8"	1"	8"
3,000	2440mm	1955mm	1710mm	20" NB	3/4"	8"	1"	8"
3,500	2640mm	2110mm	1845mm	22" NB	3/4"	10"	1"	10"